



... a greener tomorrow, today



BAYAT ENERGY



h\ ku° " Q \ 77 8k@ 'o\ O k'o\ Qyu@Vo



www.bayatenergy.co.uk

Model: 69GB-10A (10W poly crystalline solar panel)

Specification:

1. Portable Machine Size: 185*126*13.5mm Weight: 1.2 kg
(includeg 5500mAh Lithium battery, DC 16v ,19v output, USB port and plugs for laptop)
2. 10w Solar Panel Size: 350*253*17mm Weight: 1.5 kg
(includeg 2 meters cable)

Functions:

This portable system will provide a maximum of 61 Wh battery capacity which is ideal for anyone who travels and is constantly on the go with small appliance like laptop, ipad , mobile phone ,mp3,DC light bulb etc. (2-3 hours running for laptop)

Warranty:

1 years general warranty, 25 years life warranty for solar panel.



Model: 69GB-60/A (40W poly crystalline solar panel)

Specification:

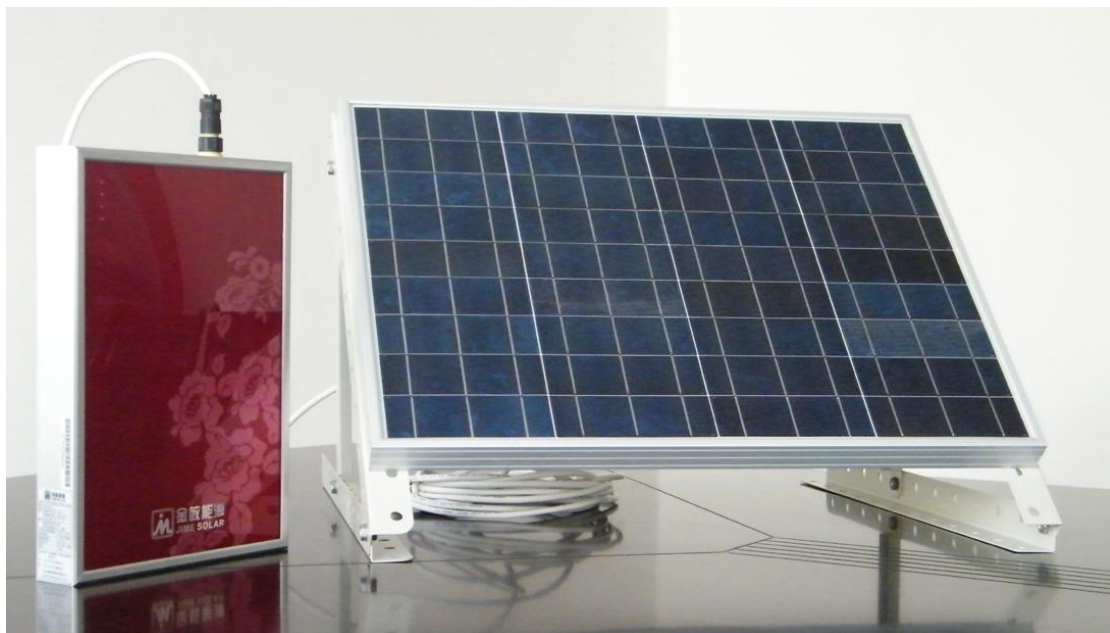
- 1.Portable Machine Size: 360*250*48mm Weight:3.4kg
(includeg 12v15Ah Lithium battery, 100w inverter)
- 2.40w Solar Panel Size: 656*502*50mm Weight:4.8kg
(includeg 10 meters cable)

Functions:

This compact system will provide a maximum of 60 watts 220V for 3 hours which is ideal for anyone who travels and is constantly on the go with small appliance like laptop, Fan, TV etc.

Warranty:

3 years general warranty, 25 years life warranty for solar panel.



Model: 69GB-100/A (50W polycrystalline solar panel)

Specification:

1.200w Main Machine Size: 230*180*360mm Weight:10kg
(includeg 12v24Ah gel battery, 200w inverter)

2.50w Solar Panel Size: 656*502*50mm Weight:4.8kg
(includeg 10 meters cable)

Functions:

LCD screen display, FM radio, USB port to play MP3 and charge mobile phone, DC and AC output

Warranty:

3 years general warranty, 25 years life warranty for solar panel.



Model: 69GB-300/A (85W mono crystalline solar panel)

Specification:

1.300w Main Machine Size: 380*175*603mm Weight:25kg
(includeg 12v48Ah gel battery, 300w inverter)

2.85w Solar Panel Size: 1196*540*35mm Weight:7.5kg
(includeg 10 meters cable)

Functions:

LCD screen display, DC and AC output, utility power switcher

Warranty:

3 years general warranty, 25 years life warranty for solar panel.



Model: 69GB-500/A (1*180W mono crystalline solar panel)

Specification:

1.600w Main Machine Size: 577*240*855mm Weight:145kg
(includeg 24V100Ah gel battery, 600w pure wave inverter)

2.180w Solar Panel Size: 1580*808*35mm Weight:15kg
(include 10 meters cable)

Functions:

LCD screen display and current &voltage meters

DC and AC output

Warranty:

3 years general warranty, 25 years life warranty for solar panel.



Model: 69GB-1000/A (4*185W mono crystalline solar panel)

Specification:

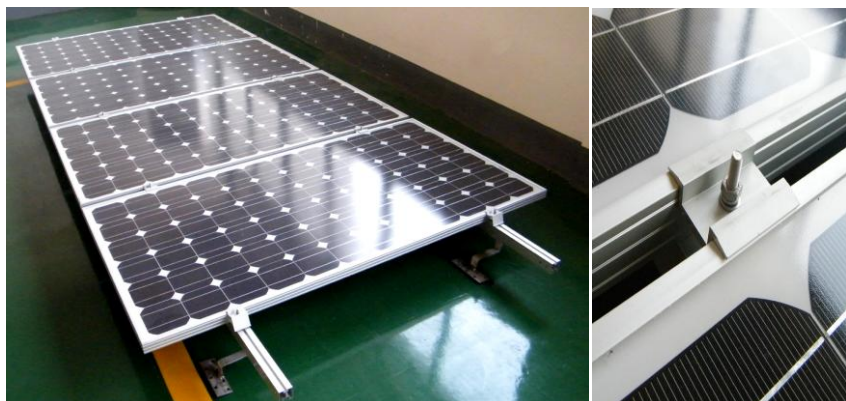
- 1 Main Machine Size: 602*352*1000mm Weight:175kg
(includeg 24V250Ah gel battery, 1000w pure wave inverter)
- 2.185w Solar Panel Size: 1580*808*45mm Weight:16kg (total:64kg)
(includes 20 meters solar cable)
3. Combiner Box 4 in 1 out, anti-thunder
4. Mounting systems (hook or roof type)

Functions:

- LCD screen display
- AC output

Warranty:

3 years general warranty, 25 years life warranty for solar panel.



Model: OGB-2000/A (8*200W poly crystalline solar panel)

Specification:

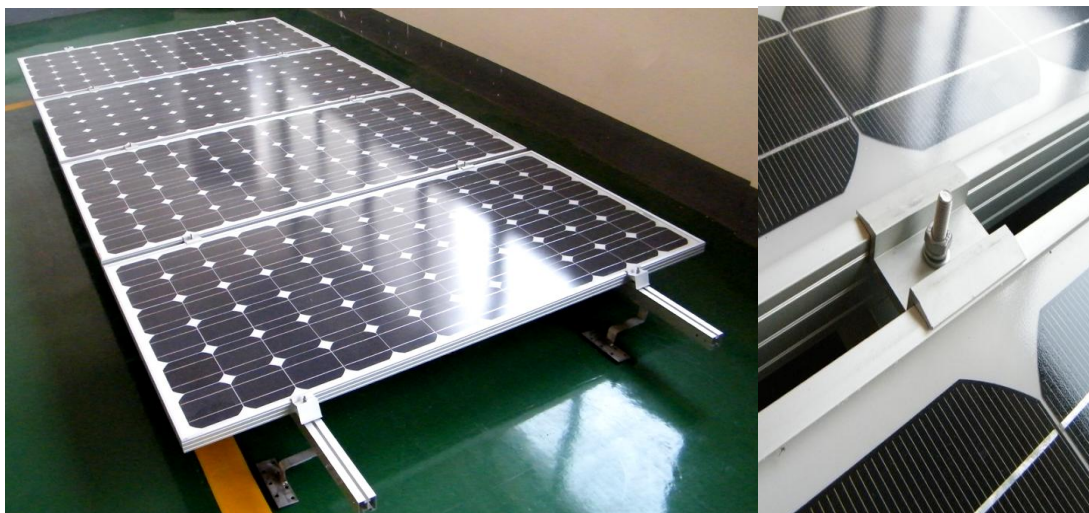
- 1 Main Machine Size: 602*352*1000mm Weight:175kg
(includeg 24V250Ah gel battery, 2000w pure wave inverter)
- 2.200w Solar Panel Size: 1482*992*45mm Weight:18kg (total:144kg)
(includes 40 meters solar cable)
3. 2*Combiner Box 4 in 1 out, anti-thunder
4. Mounting systems (hook or roof type)

Functions:

- LCD screen display
- AC output

Warranty:

3 years general warranty, 25 years life warranty for solar panel.



Portable Solar Power System



Features

The new generation BESW030W is a Portable Solar Power System consisting of crystalline Solar modules, non-maintenance AGM batteries, solar charge controller and inverter. It also contains many special features:

- ✧ Small, lightweight, high power output and high conversion efficiency
- ✧ Cigarette lighter socket conveniently connects to vehicle-mounted electronic products.
- ✧ Simple solar panel bracket design, easy for taking out and using.
- ✧ Surge short circuit , transposition overload protection
- ✧ Long useful life, low cost performance, safe and ease of maintaining.

Applications

With AC &DC output, AC can be used directly for local home applications and DC output can supply DC12V for you. This product can be widely used for boats, cars, camping, traveling, farms, forests, deserts, countryside, and other areas that lack electricity. It can also supply home applications such as a telephone, desk lamp, mobile phone, laptop, digital camera etc.

Specification parameters

Specification	Type	BESW030W-A
Solar panel	Max Power	2*15W=30W
	Working Voltage	18V
	Working Current	2*0.83=1.66A
Battery	Rating Battery Voltage	12V
	Rating Battery volume	17Ah
DC output	Max DC12V Load current	5A
	low load cut voltage	11.0V
	Load re-contact Voltage	12.8V
AC output	Rating output Voltage	220V
	Instantaneous output Power	300W (15 Min)
	Continuous output Power	240W
	Output Wave	Modified Sine Wave
	Output Frequency	50HZ



Code	Name	Note
1	LED display lamp	BATTERY - Battery volume display lamp SOLAR - Charging display lamp DC FAULT - DC loading display lamp AC POWER - Inverter working display lamp AC FAULT - Inverter working unusual display lamp
2	Solar input socket	for connecting the solar panel and power box
3	Vehicle cigar lighter socket hole	This device can be used as a charging input port or lower than a 5A loading port, it can be used as a mobile phone charger.
4	USB Interface	This interface can be used as a charging output port, Or lower than 0.5A, 5V load port, it can be used as a USB mobile phone charger.
5	DC output switch	Turn on or off the DC load, "1" is on, "0" is off.
6	Main switch	Turn on or off the main power system
7	AC output switch	Turn on or off the inverter, "1" is on, "0" is off
8	AC output socket	connect the AC load

Specification parameter

Specification	Type	
		BESW80W
Solar panel	Max Power	80W
	Working Voltage	18V
	Working Current	5.55A
Battery	Rating Battery Voltage	12V
	Rating Battery volume	100Ah
DC output	Max DC12V Load current	10A
	low load cut voltage	11.0V
	Load re-contact Voltage	12.8V
AC output	Rating output Voltage	220V
	output Power	300W
	Output Wave	Modified Sine Wave
	Output Frequency	50HZ



Code	Name	Note
1.	Solar input socket	Using for connecting the solar panel and power box
2	Vehicle cigarette socket t hole	This device can be used as charging input port, or lower than 10A loading port, like cell phone charger.
3	Main switch	Turn on or off the main power system
4	DC output socket	Connect the DC 12V load, with plug, user can connect wire by themselves, or buy our match with light load.
5	AC output socket	connect the AC load
6	Solar input terminals	Using for connecting the solar panel and power box (standby)
7	DC output terminals	Connect the DC 12V load. (standby)
8	AC output terminals	connect the AC load (standby)
9	LED display lamp	"SOLAR" Charging display lamp "BATTERY" battery volume display lamp "DC FAULT" DC loading display lamp "AC POWER" Inverter working display lamp "AC FAULT" Inverter working unusual display lamp
10	DC output switch	Turn on or off the DC load, "1" is on, "0" is off.
11	AC output switch	Turn on or off the inverter, "1" is on, "0" is off

800W OFF GRID SOLAR SYSTEM

Our 800w off-grid solar power system is a complete solar system that provides power anywhere you need it. With experience in solar systems designed for remote locations, we offer an ultimate off-grid package that features strong components that will withstand the pressure of extreme weather climates.

With 4 hours of peak sun hrs/day the 800W off-grid system is able to supply a load of 3044Wh/day and achieve 2 days of autonomy with:

.800W PV panel

.24V 250 AH Battery Bank

.1k VA Pure Wave Inverter

.24V 20A Charger Controller

.Mounting system and cables

An example of type and quantities of loads to be supplied:

Appliance/ Equipment	Qty	Rating (Watts)	Total Watts	Power Factor	Total (VA)	Hours /Day	Energy (Wh)	% Usage
Flourescent Tubes	2	40	80	0.9	89	8	712	23.39%
Fan	1	80	80	0.8	100	8	800	26.28%
Desktop PC	1	100	100	0.9	111	8	888	29.17%
TV Set	1	100	100	0.9	111	4	444	14.58%
Router	1	10	10	0.9	11	8	88	2.89%
Laser Printer	1	50	50	0.9	56	2	112	3.67%

Total AC VA 478 VA

Total AC Power required 420 W

Total AC Energy consumed daily 3044 Wh

Specification:

- 1.800w Main Machine Size: 602*352*1000mm Weight:175kg
(includes 24V250Ah gel battery, 1000 VA pure wave inverter)
2. 4*200W mono crystalline solar panel
200w Solar Panel Size: 1580*808*40mm Weight:15.8kg (total:63.2kg)
(includes 10 meters PV cable 4mm)
3. Aluminium Alloy Mounting system 800w (Hook or Roof) Weight: 25kg

Functions:

LCD screen display and All in one design
AC 220V output

Warranty:

3 years general warranty, 25 years life warranty for solar panel.



... a greener tomorrow, today



BAYAT ENERGY



h\ ku° " Q \ 77 8k@ 'o\ O k'o\ Qy u@ Vo



Bayat Energy Ltd
Suite 110 Business Design Centre
52 Upper Street, London N1 0QH
United Kingdom
tel. +44(0)20 7288 6358
email. info@bayatenergy.co.uk

www.bayatenergy.co.uk